

DAY TRAPPER

E

FINGERS 2 3 1 1 1 3 1 1

*EACH PHRASE IS TWO MEASURES LONG

A

2 3 1 3 1 1

B7

1 2 3 1 1 3 1 3

E7

* TWO MEASURE PHRASE

A7

E7

*

F#

A7

G#7 C#

B

G#7=4

E7

A7

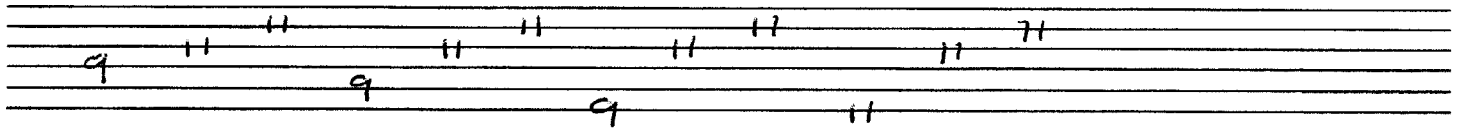
F#

A7

C#

B

WHAT'S MY AGE AGAIN?



F# C# O# B ^{3X} F# C# O# C#

Handwritten musical notation for the second staff, showing chord diagrams for F#, C#, O#, B, F#, C#, O#, and C#.

B B F# C# O# ^{3X} B F# O# C#

Handwritten musical notation for the third staff, showing chord diagrams for B, B, F#, C#, O#, B, F#, O#, and C#.

DAY TRIPPED SOLO

